

# 7 good reasons to maintain Wizcon Supervisor fully updated to its latest version

- Benefits:**
- Decrease operational costs
  - Enhance worker performance
  - Increase system security
  - Optimize asset management

## Preserve your investment

Unlike hardware (PCs, PLCs, RTUs, etc.), it is perfectly viable to own and use the latest innovations in Wizcon supervision as regards improvements in features, functionality, security and performance without having to repurchase a new license: you can obtain an upgrade to the latest version of Wizcon. Once you have it, you can either migrate your application identically, or seize the opportunity to carry out possible improvements.

This can be achieved in either of two ways:

- Purchase a one-time version or option upgrade (on CD-ROM or via remote upgrade)
- Subscribe to a Premium Maintenance contract to continually receive the latest innovations.

## Decrease the risks

Firstly, the hardware on which your applications run ages and in the event of breakdown the old versions of Wizcon (previous to 9.x) are not compatible with the operating systems provided with newer PCs. Secondly, as Windows NT is no longer supported by Microsoft, it is important to envisage a migration to ensure you have the possibility to change hardware when broken.

Moreover, the latest Wizcon applications are compatible and draw part of the innovations from Windows XP, or 2003 Server, as regards performance, security and ergonomics.

In the event of breakdown, your system would be blocked during the time required to carry out the migration onto new hardware with negative impact on your operations and a high risk of loss of critical data.

It is easy to decrease the risk of failure by having supervision running on the current Operating System supported by the hardware manufacturer.

## Facilitate your employees' daily work

For daily work, the use of Wizcon is made even easier and more powerful thanks to:

- Tooltips (automatic pop-up windows) informing the operator continuously in context
- Very powerful and fast navigation
- Clicking on the right button of the mouse can launch programs or give specific information on the designated item
- Wizcon can communicate with your other enterprise applications (CMMS, ERP, SCM, databases, etc.) to transfer the appropriate data automatically
- One can remotely visualize the supervision images using a simple Web browser for temporary access (maintenance, alarm, information, etc.)

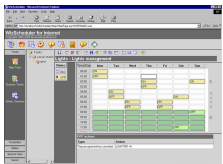
We also introduced and improved:

- Timetable scheduler for tasks
- Automated publishing of customized reports
- Advanced management of complex alarms: classification by family type, level of severity, with additional custom fields based on multiple tags, etc.
- Pushing alarms by email, SMS, voice message, fax, etc.
- Shift timetable management.

## Increase security

Safety is a major concern for owners of sensitive installations. Wizcon differentiates from simpler SCADA solutions by providing, with our latest versions, a complete and tested set of security features:

- Centralized user management: detailed directory, password, privileges, group definitions.



# 7 good reasons to maintain Wizcon Supervisor fully updated to its latest version

- Each user group directly reaches predefined filtered information and customized screens for enhanced effectiveness and greater comfort
- Wizcon integrates easily with various other security systems such as access control, CCTV/video and other company directories (LDAP)
- Full traceability (audit trail), advanced password management, automatic logoff, automatic restart with last predefined values or last known value, master-backup native feature, are all features that ensure the highest levels of security.

Still in terms of safety, older operating systems (DOS-NT-2000) are no longer supported by Microsoft and they only had very basic safety protocols, which are no longer adequate for today's more stringent regulations.

Our new versions comply with constraints imposed by the Food & Drug Administration (FDA 21 CFR Part 11) or other regulatory organizations. The FDA is the very severe and rigorous American organization that controls the production of food and pharmaceuticals. Many European regulations are inspired by it.

## Preserve your installation's evolutions

The last versions of the Wizcon software suite boast more than 160 drivers to communicate with PLCs of all generations. This allows you to preserve old PLCs and to integrate directly and rapidly most modern PLCs without the extra investment of costly communication cards.

## Simplify maintenance tasks

Wizcon's extensive network and Web interface capabilities enable you to modify your applications online (with the Development version) or simply to visualize the SCADA screens, trends graphs, events summaries, or value changes.

Your CMMS can also take its input from Wizcon, to benefit from reliable data in real time for service and maintenance tasks.

## Automated generation of personalized reports

You can easily, and without limitations, use the optional WizReport XL module to:

- Create report templates in Microsoft Excel and access Wizcon data via drop-down menus
- Generate graphs
- Automate the archival of all reports
- Publish these reports either on request, or automatically (at selected date or frequency), or even on the basis of a specific event
- Automatically send the appropriate report to the appropriate recipients
- Generate these reports in Excel, pdf (Adobe), Web (HTML) or email formats
- Easily set-up and maintain a reporting website/intranet.

Time savings are tremendous. Your reports thus are no longer a headache but instead become an additional tool for diagnosis to disseminate information and to enable improvement or cost saving in your processes.

## Prepare the future

Wizcon anticipates the requests you must fulfill in the short or medium terms, such as:

- Security: Biometrics, video, etc.
- Communication with the other Enterprise Systems
- Federation of sub-systems
- Evolution from basic monitoring to full-featured Global Asset Management
- Remote management and wireless networking
- Energy usage optimization.